

State of Wyoming Corner Record

(In compliance with the CORNER PERPETUATION AND FILING ACT, Wyoming Statutes, 1977, Section 36-11-101, et, seq., and the Rules and Regulations of the Board of Registration for Professional Engineers and Professional Land Surveyors)

Reverse side of this form may be used if more space is needed.

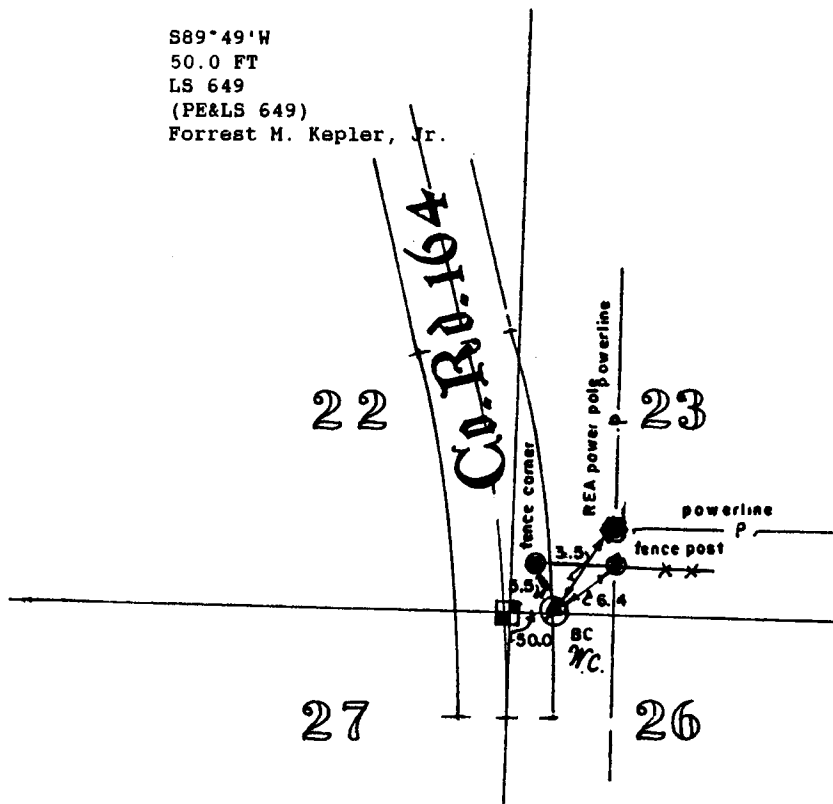
Record of original survey and citation of source of historical information (if corner is lost or obliterated). Description of corner monumentation evidence found and/or monument and accessories established to perpetuate the location of this corner. Sketch of relative location of monument, accessories, and reference points with course and distance to adjacent corner(s) (if determined in this survey). Method and rationale for reestablishment of lost or obliterated corner.

Survey by Forrest M. Kepler, Jr. in March 1970 by J. T. Banner & Assoc. Found 3" Brass cap marked as follows for witness corner East of County Road 164:

J. T. Banner & Associates  
Laramie, Wyoming

RM 1  
T14N R60W  
S22 | S23  
S27 | S26

S89°49'W  
50.0 FT  
LS 649  
(PE&LS 649)  
Forrest M. Kepler, Jr.



1731100  
LARAMIE COUNTY CLERK  
CHEYENNE, WY.  
95 NOV 30 PM 2 42

Date of Field Work: March 1970 Office Reference: \_\_\_\_\_

CROSS INDEX DIAGRAM

Firm/Agency, Address

	1	2	3	4	5	6	7	8	9	10	11	12	13	14	15	16	17	18	19	20	21	22	23	24	25	
A																										
B																										
C																										
D																										
E																										
F																										
G																										
H																										
J																										
K																										
L																										
M																										
N																										
O																										
P																										
Q																										
R																										
S																										
T																										
U																										
V																										
W																										
X																										
Y																										
Z																										

Terrestrial Surveying & Mapping  
P. O. Box 82  
Cheyenne, Wy 82003  
Telephone Number: 307 634-9360

This corner record was prepared by me or under my direction and supervision.

SEAL & SIGNATURE



Corner Name: 22/23/27/26 Section: 22 T14N R60W : 6th P.M. Cross-Index No.: R-17